



Roxtec C LH brtva

Lagana brtva za pričvršćivanje vijcima na strukturu.

Roxtec C LH je kompaktno, lagano, ali vrlo snažno brtveno rješenje za tranzit više kabela i cijevi dostupno u pet različitih veličina. Okvir brtvenog prstena izrađen je od aluminija, a na strukturu se pričvršćuje vijcima. Brtveni moduli mogu se prilagoditi kabelima i cijevima različitih veličina te se mogu koristiti za stvaranje dodatnog prostora u brtvenom prstenu. Pruža protupožarnu i zaštitu od prodora te retenciju kabela otpornu na vibracije, a kao takav idealan je za podne i zidne primjene u sektorima mobilnosti, kao što su željeznička vozila.



- Lagano
- Površinski učinkovito
- Osigurava rezervni prostor

Karakteristike proizvoda



Vatrootpornost



IP/UL NEMA

Struktura instalacije



Ormari i kućišta



Metal

Vrsta montaže



Pričvršćivanje vijcima

Klase i certifikati

Požar

- Razred E/EI u skladu s normom EN 45545 E30
- HL3 prema EN 45545-2 (R22, R23)

Nepropusnost

- IP 66 prema IEC 60529

Podržava

- Kategorija udara i vibracija 2 prema IEC 61373

Dimenzije okvira

mm/kg

Varijante okvira u nastavku ograničen su izbor. Za cijeli raspon okvira i konfiguracija posjetite [roxtec.com](https://www.roxtec.com).

Proizvod	Otvori okvira	Prostor za smještaj	Vanjske dimenzije WxHxD	Dimenzije otvora w x h	Težina	Broj artikla
C LH 3x1 ALU	1	60 x 120	120.2 x 218.5 x 30	76(+1/-1) x 174.5(+1/-1)	0.59	234431
C LH 4x1 ALU	1	120 x 120	180.2 x 218.5 x 30	136(+1/-1) x 174.5(+1/-1)	0.68	234434
C LH 5x1 ALU	1	60 x 180	120.2 x 276.5 x 30	76(+1/-1) x 232.5(+1/-1)	1	234432
C LH 6x1 ALU	1	120 x 180	180.2 x 276.5 x 30	136(+1/-1) x 232.5(+1/-1)	1	234435
C LH 7x1 ALU	1	60 x 240	120.2 x 336.5 x 30	76(+1/-1) x 292.5(+1/-1)	0.72	234433

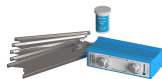


Komponente za brtvljenje

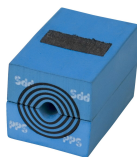
Komponente za brtvljenje



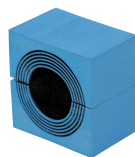
Lubricant Blue



Klin i komplet klinova C



Modul CM PPS sa značajkom Multidiameter™



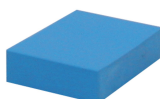
Modul CM sa značajkom Multidiameter™



Nivelacijska pločica C



Alati za pridržavanje Roxtec



Čvrsti modul za kompenzaciju CM

Za detaljne informacije posjetite [roxtec.com](https://www.roxtec.com).

The product information provided by Roxtec does not release the purchaser of the Roxtec system, or part thereof, from the obligation to independently determine the suitability of the products for the intended process, installation and/or use.

Roxtec gives no guarantee for the Roxtec system or any part thereof and assumes no liability for any loss or damage whatsoever, whether direct, indirect, consequential, loss of profit or otherwise, occurred or caused by the Roxtec systems or installations containing components not manufactured by an authorized manufacturer and/or occurred or caused by the use of the Roxtec system in a manner or for an application other than for which the Roxtec system was designed or intended.

Roxtec expressly excludes any implied warranties of merchantability and fitness for a particular purpose and all other express or implied representations and warranties provided by statute or common law. User determines suitability of the Roxtec system for intended use and assumes all risk and liability in connection therewith. In no event shall Roxtec be liable for indirect, consequential, punitive, special, exemplary or incidental damages or losses.

The Roxtec products are offered and sold in accordance with the conditions of the Roxtec General Terms of Sales. The latest version of the Roxtec General Terms of Sales can be downloaded from <https://www.roxtec.com/en/about-us/about-roxtec/general-terms-of-sales/>

We reserve the right to make changes to the product and technical information without further notice. Any errors in print or entry are no claims for indemnity. The content of this publication is the property of Roxtec International AB and is protected by copyright.

This document was generated on = 2026-05-12

